



## TOYOTA PRADO 250 SERIES MY2025 ON ROCK SLIDERS

### **IMPORTANT! – READ BEFORE INSTALLATION**

- This product must be installed exactly as per these instructions using only hardware supplied.
- Take a few moments to read instructions thoroughly before beginning work.
- In the event of damage to any bar component please contact OFFROAD ANIMAL to arrange repair/replacement of components.
- Do not use this product for any vehicle make or model other than that specified on these instructions.
- Do not remove labels from this product.
- This product and its fixings must not be modified in any way unless stated in these fitting instructions.
- The installation of this product is recommended for trained personnel.
- These instructions are correct at time of publication. OFFROAD ANIMAL cannot be held responsible for the impact of any changes subsequently made by the vehicle manufacturer. If you find something has changed please contact us to let us know!
- During installation it is the duty of the installer to check correct operation/clearances of all components.
- If Instructions are to be printed for reference in the workshop, it is recommended that they are printed in colour, for best legibility.
- Fitting time estimated 1.5-3 hours

## GENERAL CARE AND MAINTENANCE

Only wash the product with a PH neutral car wash to prevent paint damage and discolouration.

Plastic parts may be maintained with silicone spray.

Do not use acidic or alkaline based cleaning products.

It is important to perform regular checks (pre trip or on an annual basis) on the installed product. Checks include:

- Visual inspection for damage (eg. cracks, chips, dents etc.)
- Electrical wiring is not rubbing anything or worn out
- Bolts are torqued to correct specification (see torque guide below)

For touching up small stone chips, Offroad Animal recommends the following paint products:

- Dupli-Color Trim & Bumper Paint Black (TB101)
- VHT Hood, Bumper & Trim Paint Black (SP27)

## BOLT TORQUE SETTINGS

Use the following bolt torques on all general fasteners, unless otherwise specified.

GENERAL FASTENERS	
Size	Torque Nm
M5	5 Nm
M6	9 Nm
M8	22 Nm
M10	44 Nm
M12	77 Nm

Use the following bolt torques on all structural front bar mount and tow point fasteners, and rear towbar fasteners, unless otherwise specified.

FRONT BAR MOUNTS AND TOW POINTS + REAR TOWBAR	
Size	Torque Nm
M10	57 Nm
M12	100 Nm
M14	164 Nm
M16	248 Nm

**Always use a torque wrench to set correct torque settings. Ensure torque wrench is set to Nm unit of measurement. Otherwise perform conversion to lb-ft.**

## PARTS LISTING

**IMPORTANT:** Check all parts are present before beginning work! Contact OFFROAD ANIMAL if something is missing.

### Main Parts – In the Box

Qty	Part Number	Description	Image
1	RSW-TPR-250-25-ASM1	Toyota Prado 250 Welded Rock Slider Assy RH	
1	RSW-TPR-250-25-ASM2	Toyota Prado 250 Slider Welded Assy LH	
1	RSW-TPR-250-25-ASM3R	Toyota Prado 250 Rock Slider - Front Mount Brace Assy	
1	RSW-TPR-250-25-ASM3L	Toyota Prado 250 Rock Slider - Front Mount Brace Assy	
1	RSW-TPR-250-25-ASM4R	LC250 Sliders Round Tube End Cap	
1	RSW-TPR-250-25-ASM4L	LC250 Sliders Round Tube End Cap	
1	B-1509	Toyota Prado 250 Rock Slider - Mid Mount Bolt On Brace	
2	NP-TUB-40NBH-2XM10-ASM0	40NB Heavy Double Nut Plate 2xM10, 25mm Spacing	

4	BP-COM-M10X30-250-ASM0	Bolt Plate M10X30, 250mm stem	
2	NP-COM-M12-40-ASM0	M12 NUT PLATE SHORT, 40MM STEM ROUNDED	
4	NP-COM-M10-220-ASM0	M10 LOLLYPOP CINCH NUT PLATE 220MM LONG	
2	T-0136	Toyota Prado 250 Rock Slider - Front Mount Crush Tube	
2	P-0529	LC250 Slider Center Mount Lower Shim	

**Small Parts – Contained in Small Parts Kit Bag**

Qty	Part Number	Description
<b>12</b>	M10 FW LHD	WASHER, FLAT M10X28.5X2.5
<b>4</b>	M10 x 25	Bolt Hex, M10X25x[1.5], GR8.8 ZP Purchased 4
<b>4</b>	M10X35X1.25	Bolt Hex, M10X35X1.25, GR8.8 ZP
<b>2</b>	M10 X 70	Bolt Hex, M10X70X1.5, GR8.8 ZP
<b>2</b>	M8 X 20 HEX	Bolt Hex, M8X20x1.25, GR8.8 ZP
<b>2</b>	M8 FLAT WASHER	M8 FW
<b>2</b>	M8 FLANGE NUT	Flange Nut, M8x1.25 G8.8 ZP
<b>2</b>	M12X30	Bolt Hex, M12X30x1.75, GR8.8 ZP
<b>2</b>	M12 FLAT WASHER	M12 FW
<b>4</b>	M10 x 30	Bolt Hex, M10X30x[1.5], GR8.8 ZP
<b>2</b>	M10 Flat Washer	M10 FW
<b>4</b>	M10 Flat Washer Black Zinc	WASHER, FLAT M10X20.5X1.6, ISO4042 ZnNi BLACK PASSIVATED FINISH
<b>4</b>	M10 x 35 BLACK ZINC	Bolt Hex, M10X35x[1.5], GR8.8 ZP, ISO4042 ZnNi BLACK PASSIVATED FINISH
<b>4</b>	M8 X 20 BHCS BLACK ZINC	SCREW, BUTTON HEAD CAP, M8X20X1.25, ISO4042 ZnNi BLACK PASSIVATED FINISH
<b>4</b>	M8 HD FLAT WASHER - BZP	M8 FLAT WASHER - High Tensile 19x8x2mm, ISO4042 ZnNi BLACK PASSIVATED FINISH




TOOLS REQUIRED

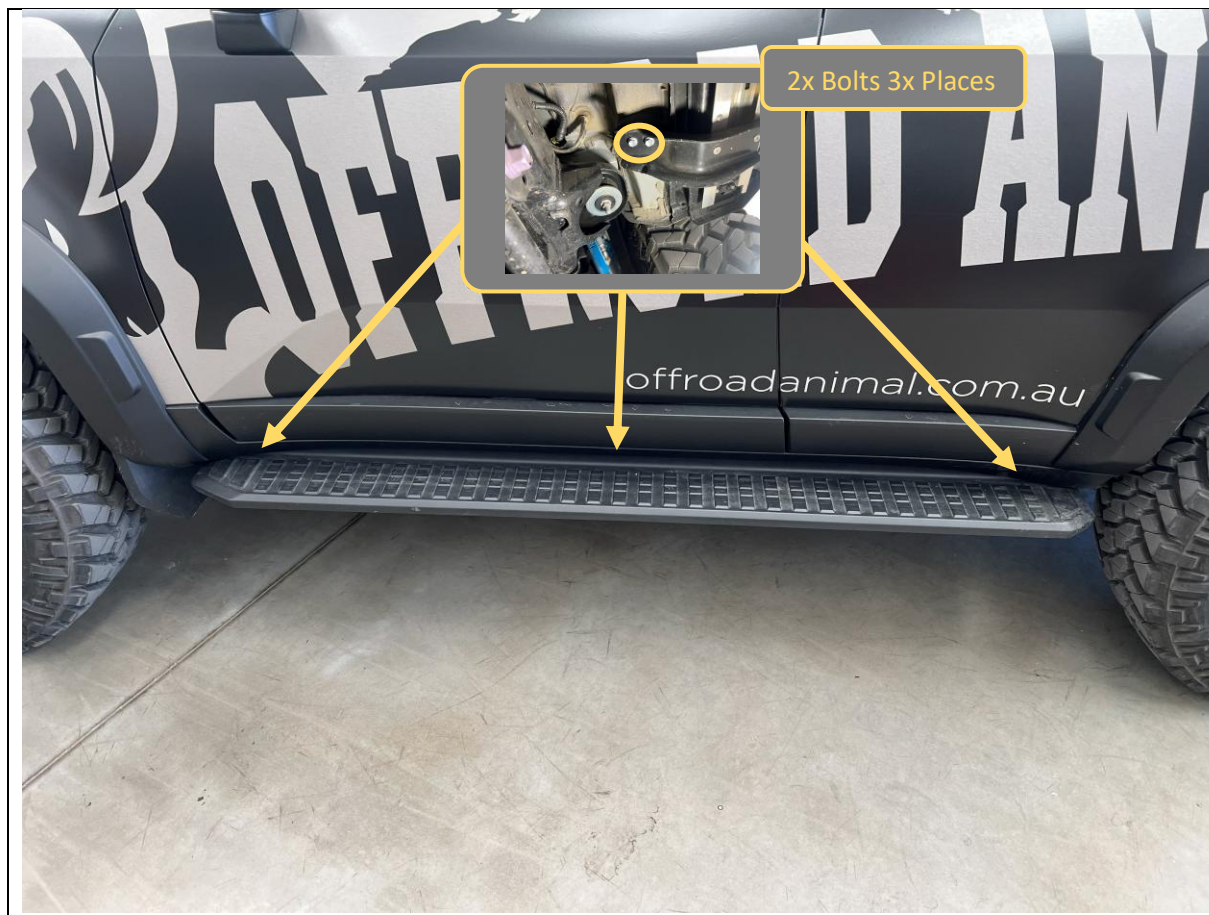
The following tools will be required to install the product.

Hand Tools	Power Tools	Workshop Equipment
Metric Socket Set 8-19mm Socket Extension Bar Breaker bar with articulating head Metric Spanner Set 10-19mm Hex (Allen) Key Set 4-6mm Trim Puller Tool Side Cutters Pliers	Electric/Air Impact Driver (Optional)	Hydraulic Lift Trolley Cable Ties

## WORKSHOP SAFETY

It is the responsibility of the installer to always complete works in a safe manner. Make sure the following safety equipment is available and precautions are observed whilst fitting this product.

<p>Hearing Protection</p> 	<p>Always wear ear protection when using power tools.</p>
<p>Eye Protection</p> 	<p>Ensure eye protection is always worn when cutting or drilling.</p>
<p>Manual Handling</p> 	<p>Do not attempt to lift bar assemblies or rock sliders on your own.</p> <p>Always use two people to lift or use mechanical Lifting aid such as hydraulic lifting trolley.</p>
<p>Vehicle Support</p> 	<p>Always ensure vehicle is properly supported when working on it. Do not attempt to fit products whilst suspension work is being carried out. Do not work under a vehicle supported only by a jack.</p>



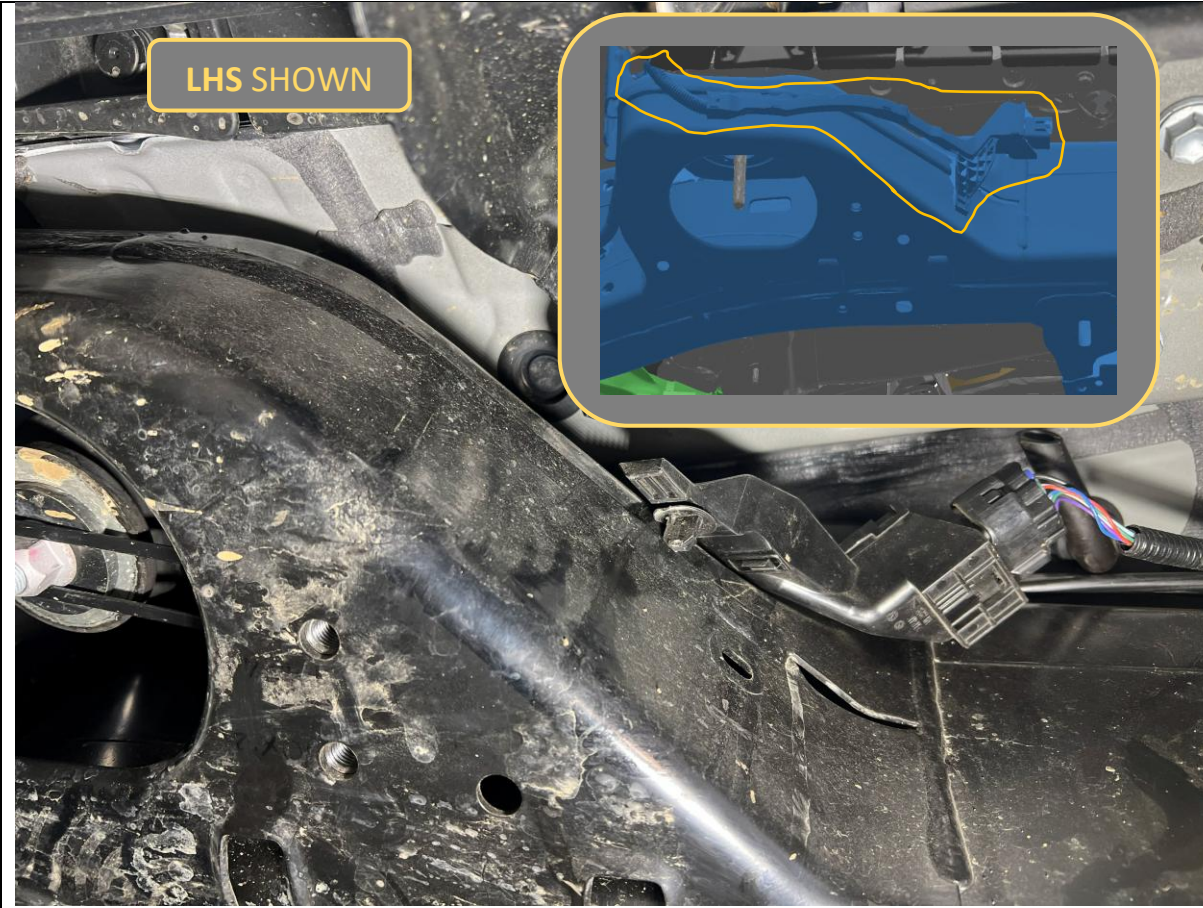
1. Remove Factory side steps if fitted by removing the 6x Bolts (2 Per mount) securing them to the body using a 12mm socket.
2. Discard Factory steps and bolts.

**TOOLS REQUIRED**

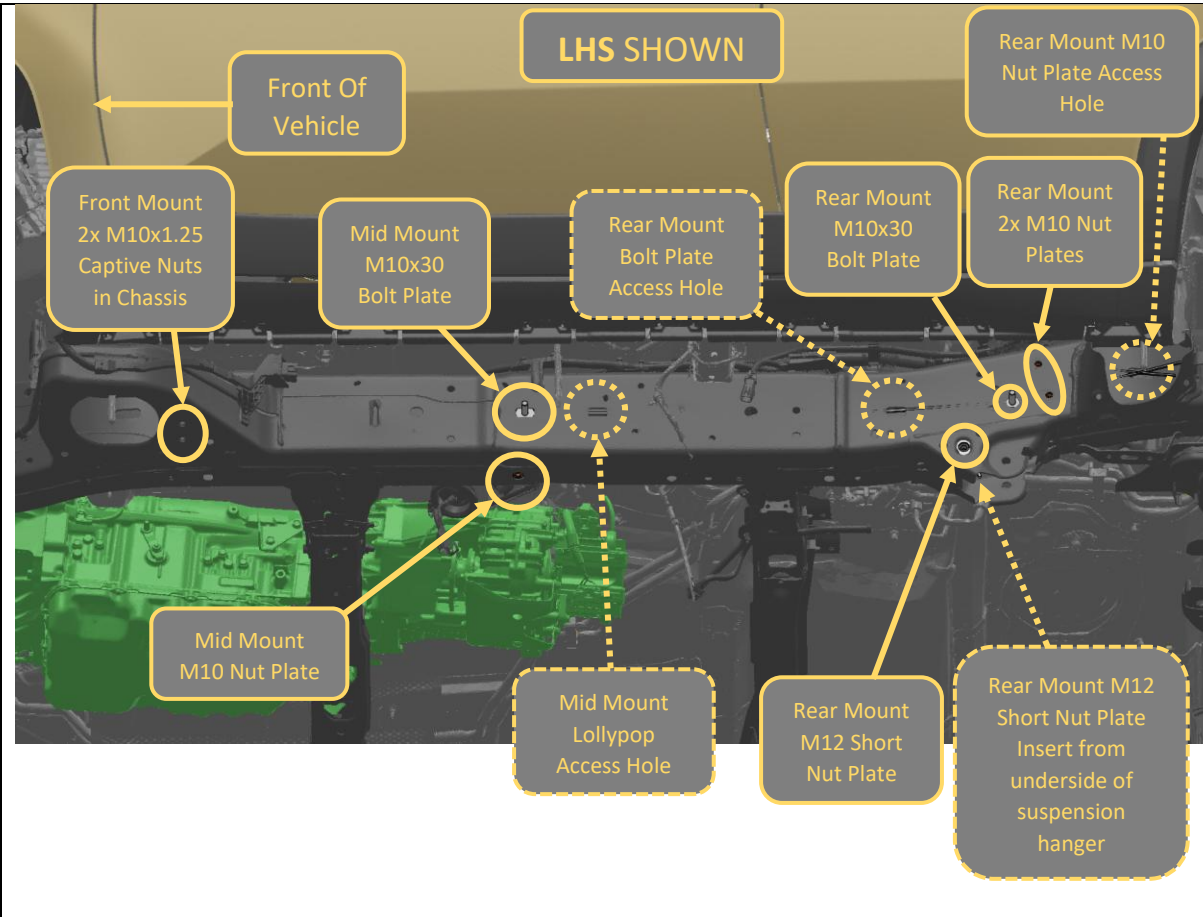
12mm socket

**FASTENERS**6x Factory Flange head  
Bolts  
(per side)

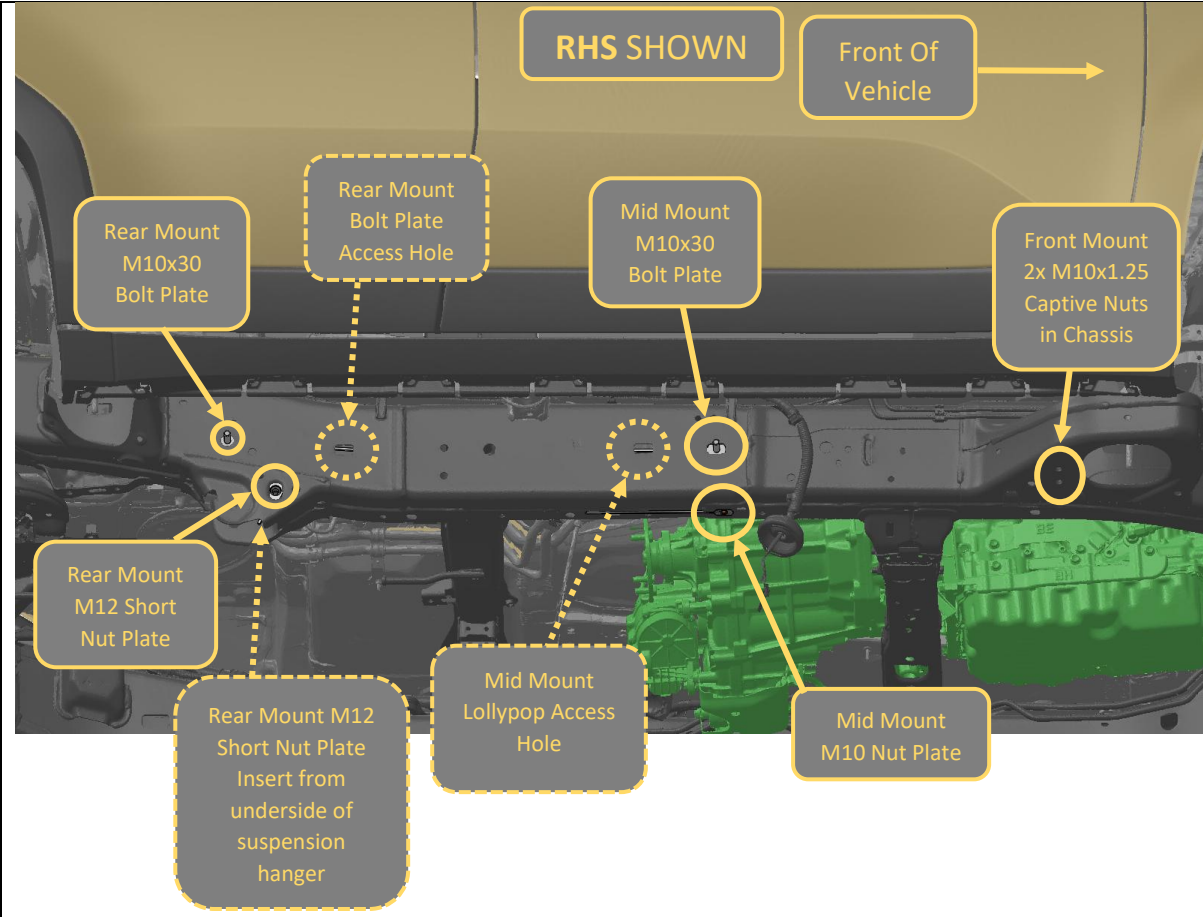




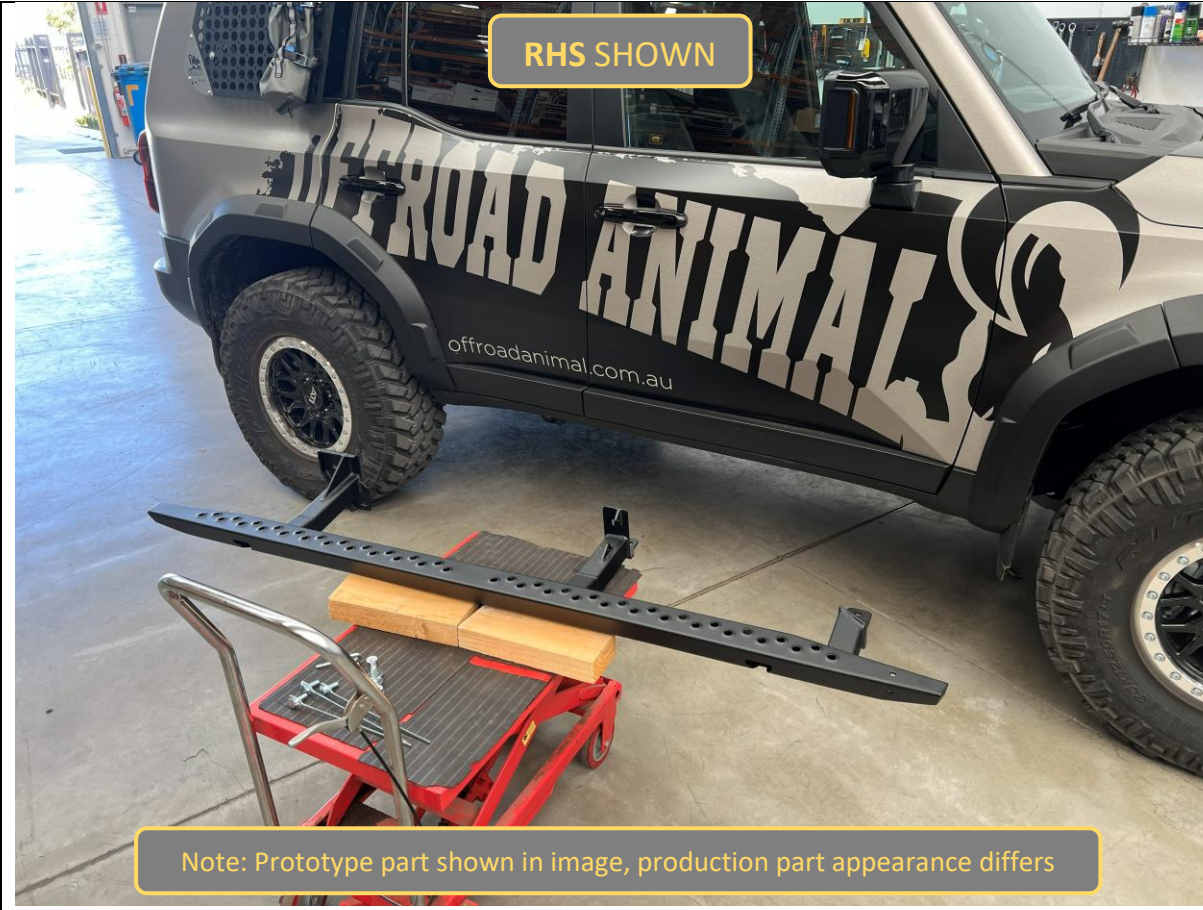
<div>3. Unclip the wiring harness that runs around the LH front body mount, using a trim tool.</div> <div>4. Re Route the harness above the body mount and tie up with cable ties.</div> <div>5. Ensure any plugs disconnected during re-location process are re connected.</div>	<div>TOOLS REQUIRED</div> <div>Trim Tool Cable Ties</div>
	<div>FASTENERS</div>



<div>6. On LHS of vehicle locate features in the chassis that the rock slider mounts to, referring to image above.</div> <div>7. Pre-Position the bolt/nut plates for the mounts in the locations shown. Bend the stems to allow the plates to be manipulated to the correct positions.</div> <div>Pliers can be useful to grip the stems and add leverage to produce accurate bends in the stems.</div> <div>8. Once stems of lollypop fasteners are correctly bent to allow positioning remove from chassis and store in ordered manner to allow quick access during fitment.</div>	<div>TOOLS REQUIRED</div> <div>Pliers</div>
	<div>FASTENERS</div> <div>2x M10x30 Bolt Plate</div> <div>3x M10 Nut Plate</div> <div>1x M12 Short Stem Nut Plate</div>

	
<div>9. On RHS of vehicle locate features in the chassis that the rock slider mounts to, referring to image above.</div> <div>10. Pre-Position the bolt/nut plates for the mounts in the locations shown. Bend the stems to allow the plates to be manipulated to the correct positions.</div> <div>Pliers can be useful to grip the stems and add leverage to produce accurate bends in the stems.</div> <div>11. Once stems of lollypop fasteners are correctly bent to allow positioning remove from chassis and store in ordered manner to allow quick access during fitment.</div>	<div>TOOLS REQUIRED</div> <div>Pliers</div>
	<div>FASTENERS</div> <div>2x M10x30 Bolt Plate</div> <div>1x M10 Nut Plate</div> <div>1x M12 Short Stem Nut Plate</div>



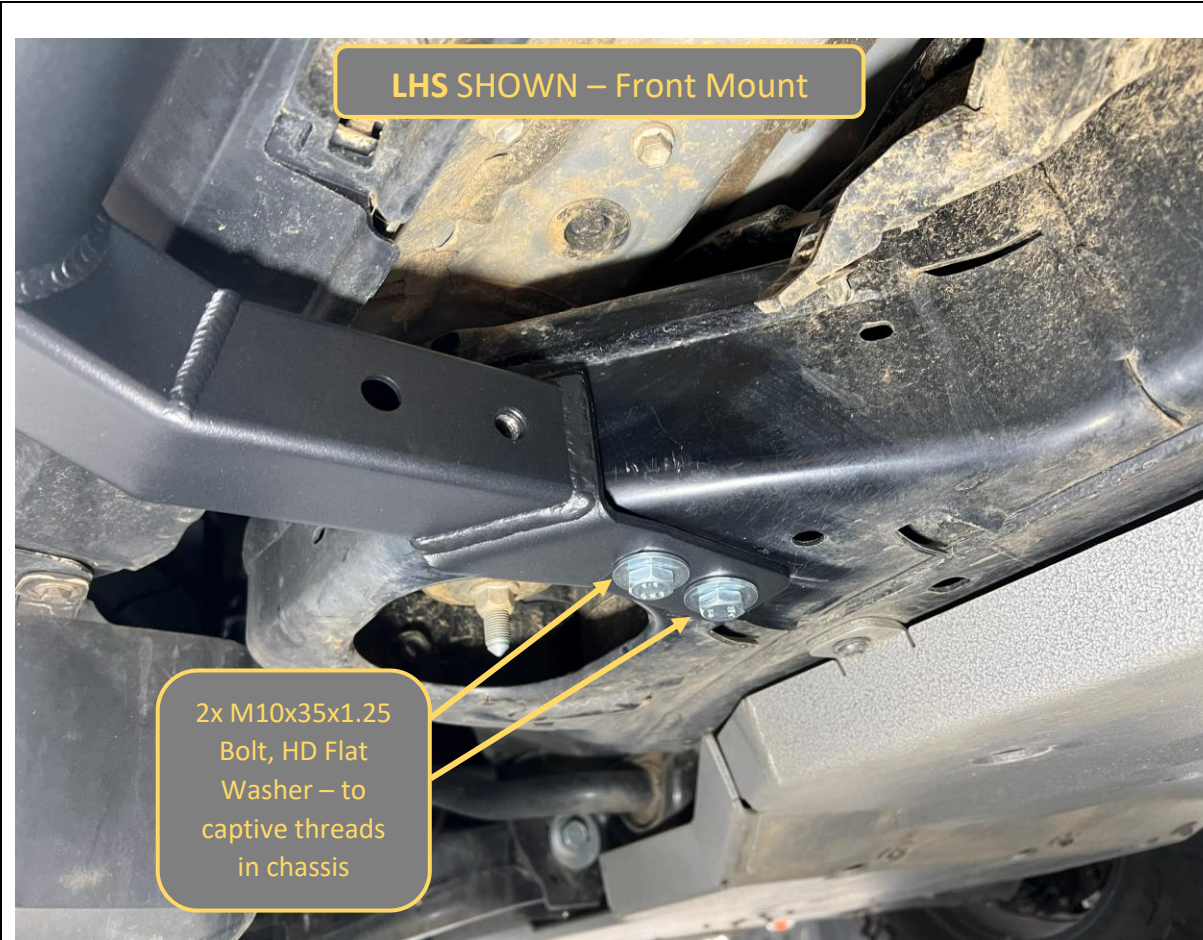


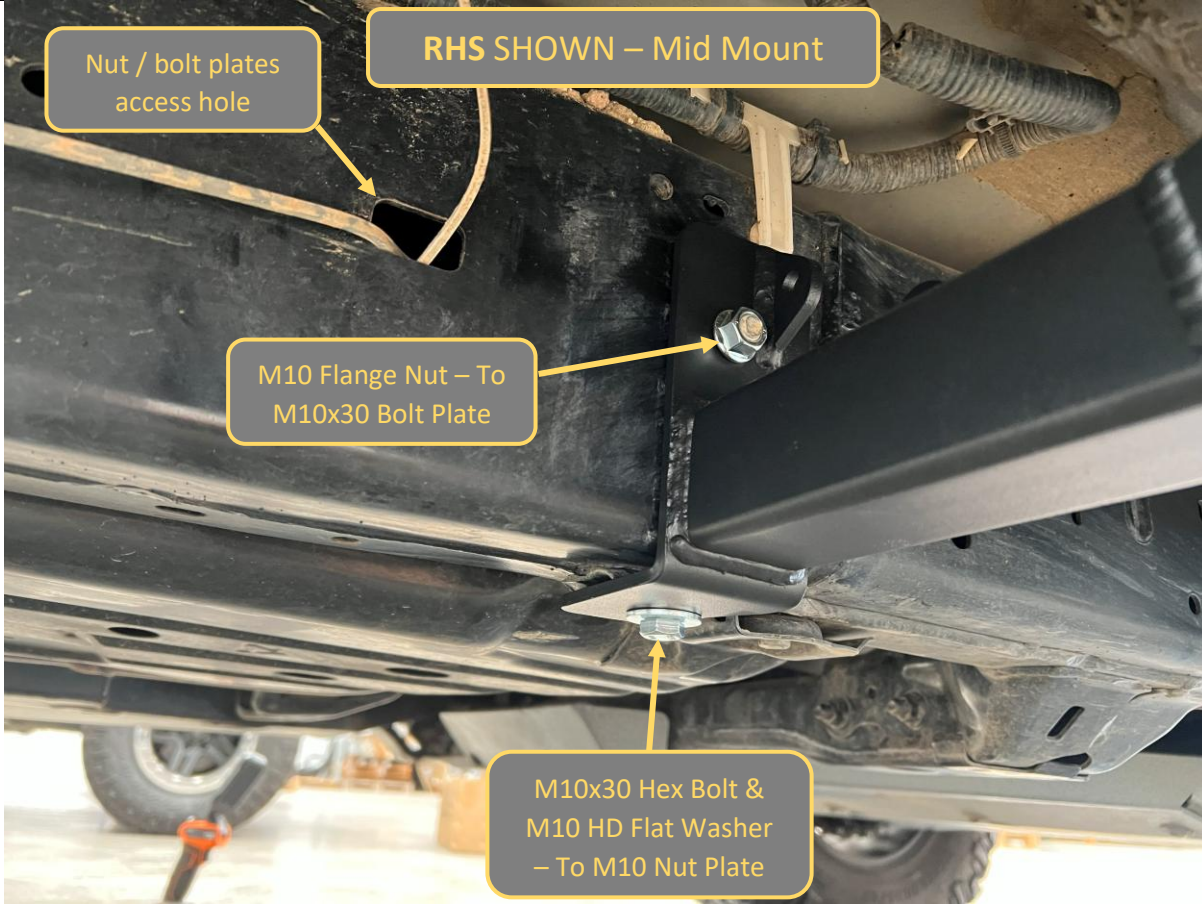
12. Unpack welded slider assembly and position on lifting trolley such that mounts sit approximately level.	<b>TOOLS REQUIRED</b>  Lifting Trolley
	<b>FASTENERS</b>



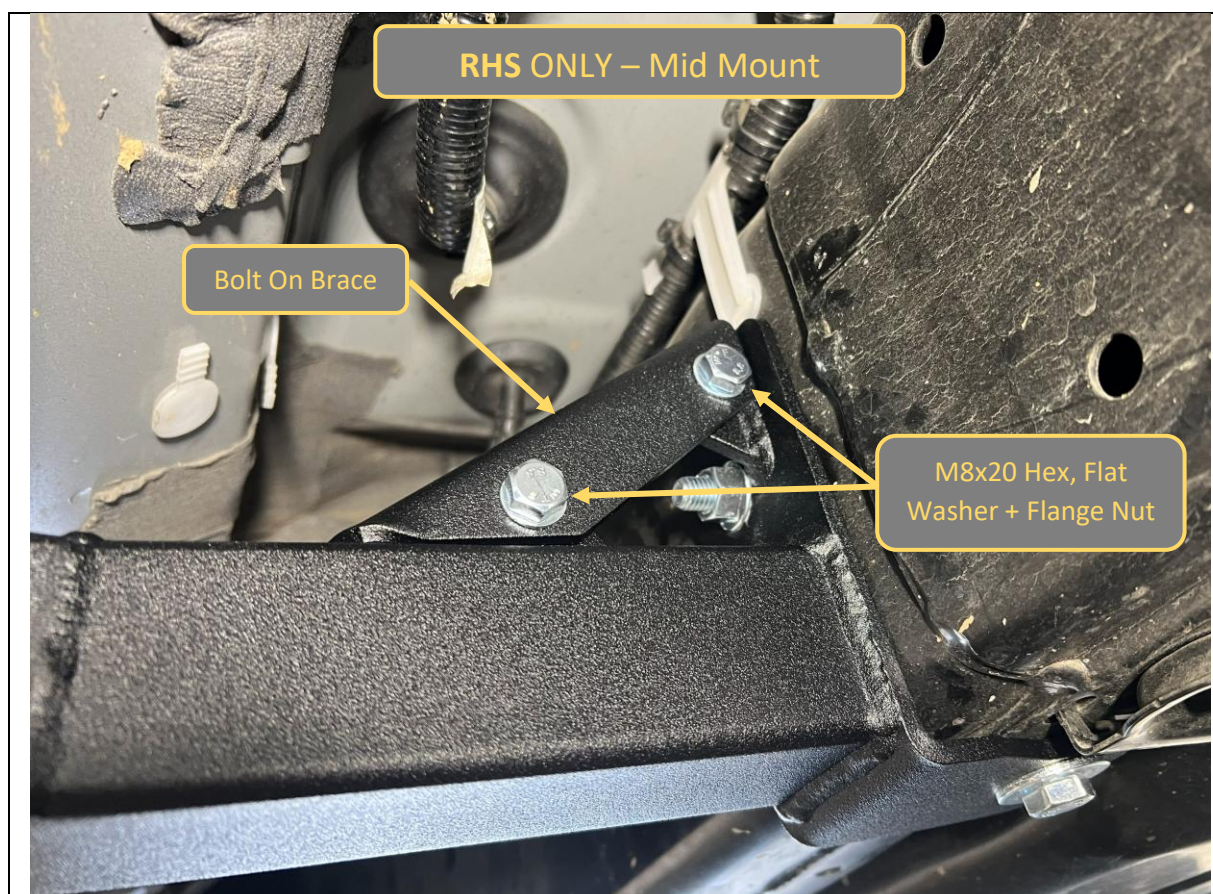
<p>13. With assistance from another person fit the slider to the vehicle and secure to mounting locations shown in steps 6-11. Details of each mount location are shown in the following steps, but do not need to be done in the order shown.</p>	<p><b>TOOLS REQUIRED</b></p> <p>Lift Trolley Patience Finger Dexterity</p>
<p>14. We find the best way to fit is to have one person underneath the car to manipulate the mounts and nut / bolt plates into position and a second person to assist support and position the slider assembly. It is necessary to move the slider inwards first, tilting to get under the vehicle sill, and then up to the final position.</p> <p>15. Ensure the sliders sit directly against the chassis rail and do not pinch or trap any electrical harnesses or fluid lines.</p> <p>16. There are some differences between the different sides, which will be highlighted in the following steps. Complete fitting for both sides.</p>	<p><b>FASTENERS</b></p>



 <p>LHS SHOWN – Front Mount</p> <p>2x M10x35x1.25 Bolt, HD Flat Washer – to captive threads in chassis</p>	
<div>17. Secure front mount using 2x M10x35x1.25 Bolts &amp; HD Flat washers into the M10x1.25p Captive nuts in the chassis.</div> <div>18. Snug bolts, but do not yet tighten.</div> <div>19. Front mount is the same on both sides of the vehicle.</div>	<b>TOOLS REQUIRED</b>
	<b>FASTENERS</b>  2x M10x35x1.25 Bolt 2x M10 HD Washer  Per Side

	
<p>20. Secure center mount using M10 Flange nut &amp; M10x30 Hex Bolt + HD Washer, as shown.</p> <p>21. Leave mid mount bolts finger tight at this stage.</p> <p>22. Mid-mount connections are the same on both sides.</p>	<b>TOOLS REQUIRED</b>
	<b>FASTENERS</b>  1x M10 x30 Hex Bolt 1x M10HD Washer 1x M10 Flange Nut





23. On RH side, fit the bolt on brace to the mount, using the supplied M8x20 Hex Bolts, M8 Flat washers and M8 Flange nuts. Tighten M8 Bolts now.

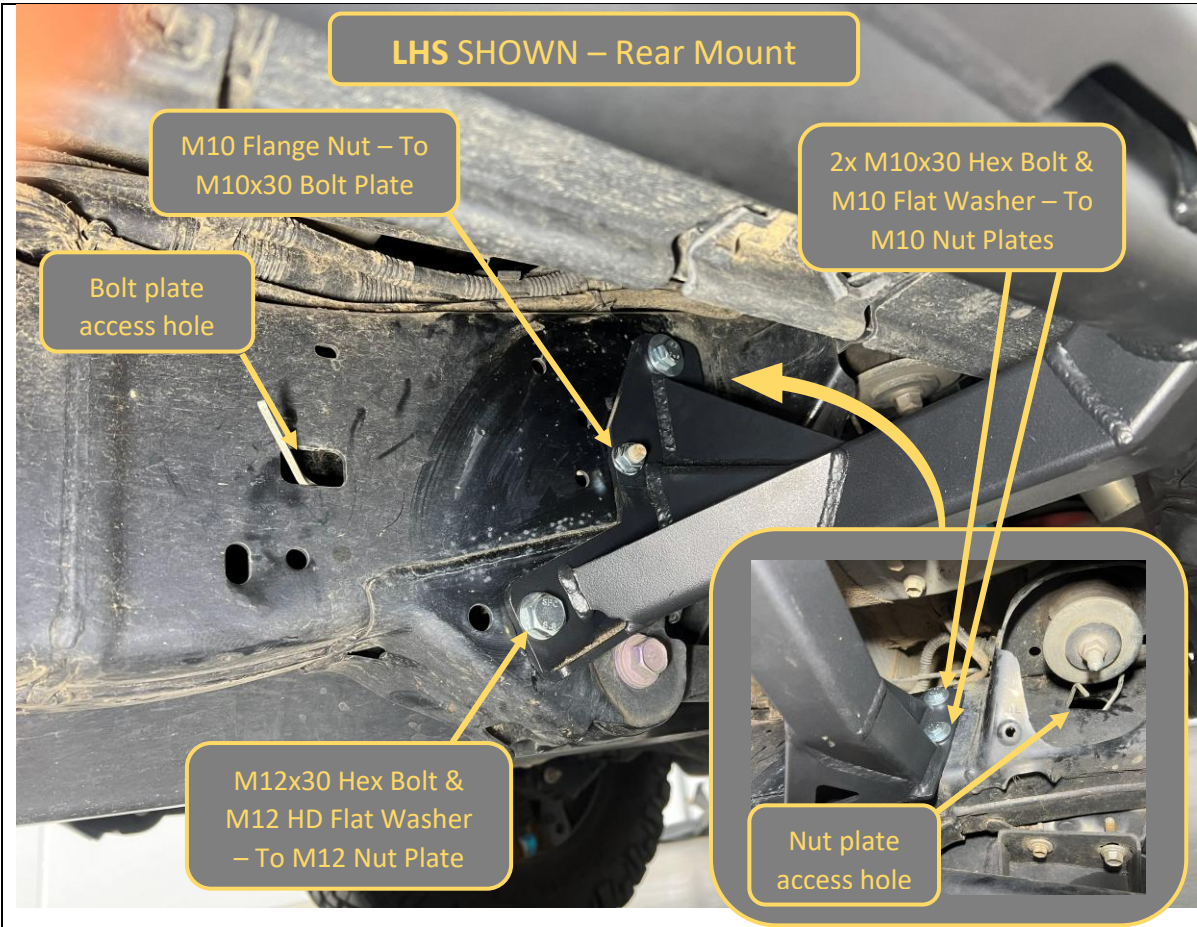
This feature is to allow fitment to Lexus GX550 vehicles with KDSS (fitment to be confirmed in future).

**TOOLS REQUIRED**  
13mm Spanner / Socket

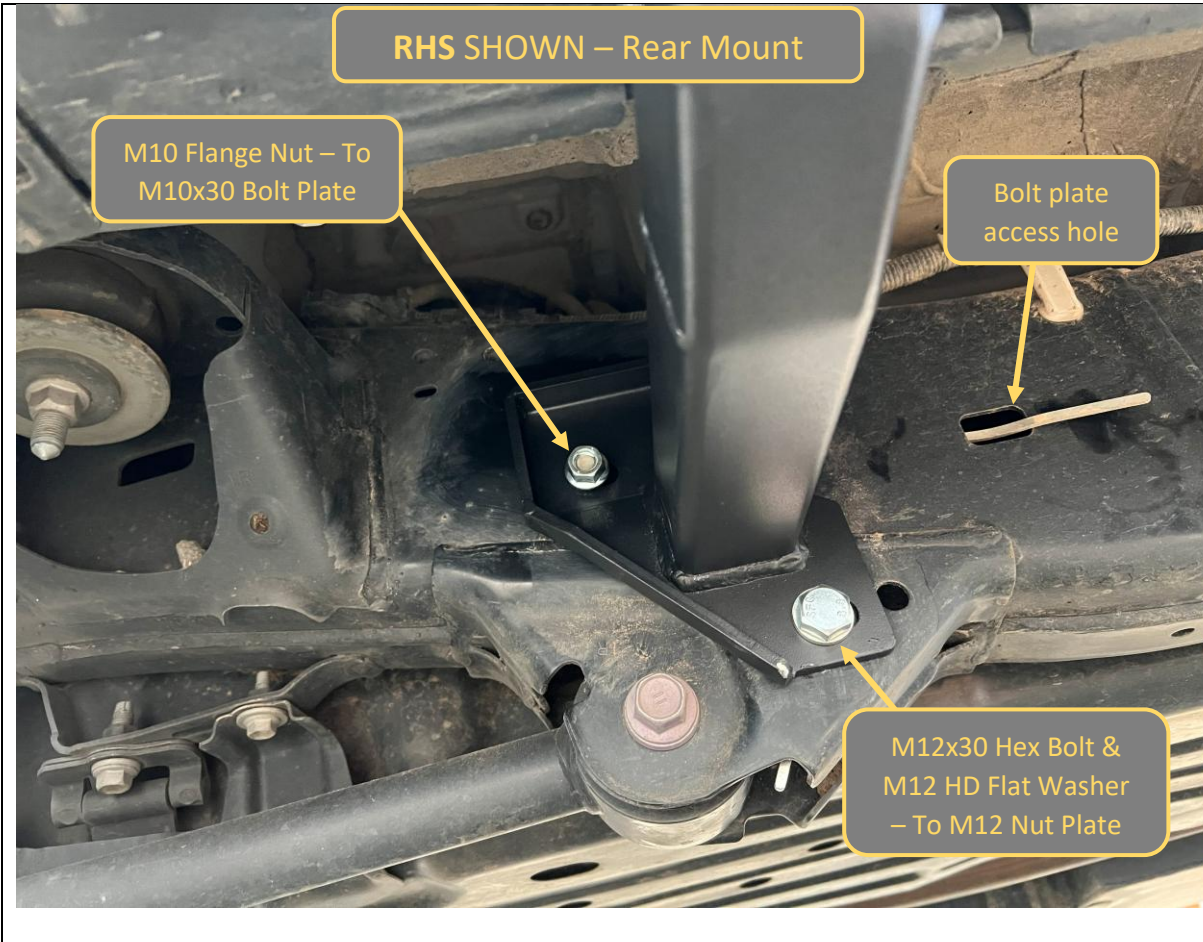
**FASTENERS**

2x M8x20 Hex Bolt  
2x M8 Flat Washer  
2x M8 Flange Nut  
RHS Only





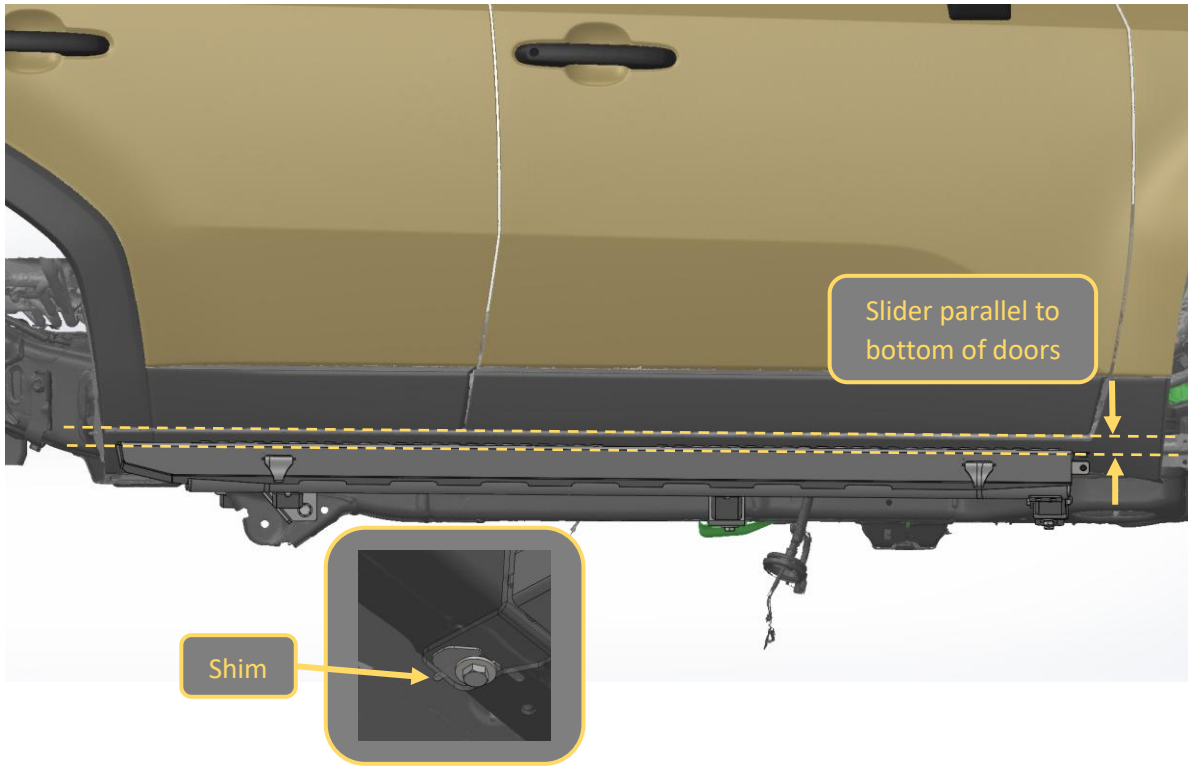
<p>24. Rear-mount connections are different on each side. LHS shown on this page, see next page for RHS.</p> <p>25. Secure LH rear mount using fasteners shown in the image.</p> <p>26. Leave rear mount bolts finger tight at this stage.</p>	<p><b>TOOLS REQUIRED</b></p>
	<p><b>FASTENERS</b></p> <p>1x M12x30 Hex Bolt 1x M12HD Washer 1x M10 Flange Nut 2xM10x30 Hex Bolt 2x M10 Flat Washers</p>



<div>27. Rear-mount connections are different on each side. RHS shown on this page, see previous page for LHS.</div> <div>28. Secure RH rear mount using fasteners shown in the image.</div> <div>29. Leave rear mount bolts finger tight at this stage.</div>	<b>TOOLS REQUIRED</b>
	<b>FASTENERS</b> 1x M12x30 Hex Bolt 1x M12HD Washer 1x M10 Flange Nut

<b>RHS SHOWN – Front Mount Brace</b>	
<p>30. Once all mounts are fitted to the vehicle, fit the front mount braces to the front mounts &amp; vehicle chassis.</p> <p>31. Secure brace to slider using M10 Fasteners shown in image.</p> <p>32. Secure brace to chassis using M10 Fasteners through hole in body mount highlighted in inset image. Ensure fasteners are in correct order. The bolt needs to be inserted from below and secured with the nut on top.</p> <p>33. Leave all front mount brace bolts loose at this stage.</p>	<p><b>TOOLS REQUIRED</b></p>
	<p><b>FASTENERS</b></p> <p>2x M10x25 Hex Bolt 1x M10x70 Hex Bolt 3x M10 HD Washer 2x M10 Flange Nut 1x T-0136 Crush Tube</p> <p>Per Side</p>



<div><div>RHS SHOWN</div></div>	
<div><div>34. Ensure the front mount M10x35x1.25p Bolts are snug, and the front mount is sitting flush against the chassis.</div><div>35. Lift the rear of the slider to adjust slider position such that the step is parallel with the bottom of the doors. Lock in position by tightening at least 2x of the bolts in the rear mount.</div><div>36. Tighten all remaining horizontal mounting bolts / nuts.</div><div>37. Check clearance on the bottom bolt on the mid mount, if required (gap is &gt;2mm) fit shim by sliding into position between chassis and mount.</div><div>38. Tighten all Vertical mounting bolts.</div></div>	<div><b>TOOLS REQUIRED</b></div> <div>15,16 &amp; 18mm socket / spanner</div>
	<div><b>FASTENERS</b></div> <div>Shim</div>

RHS SHOWN

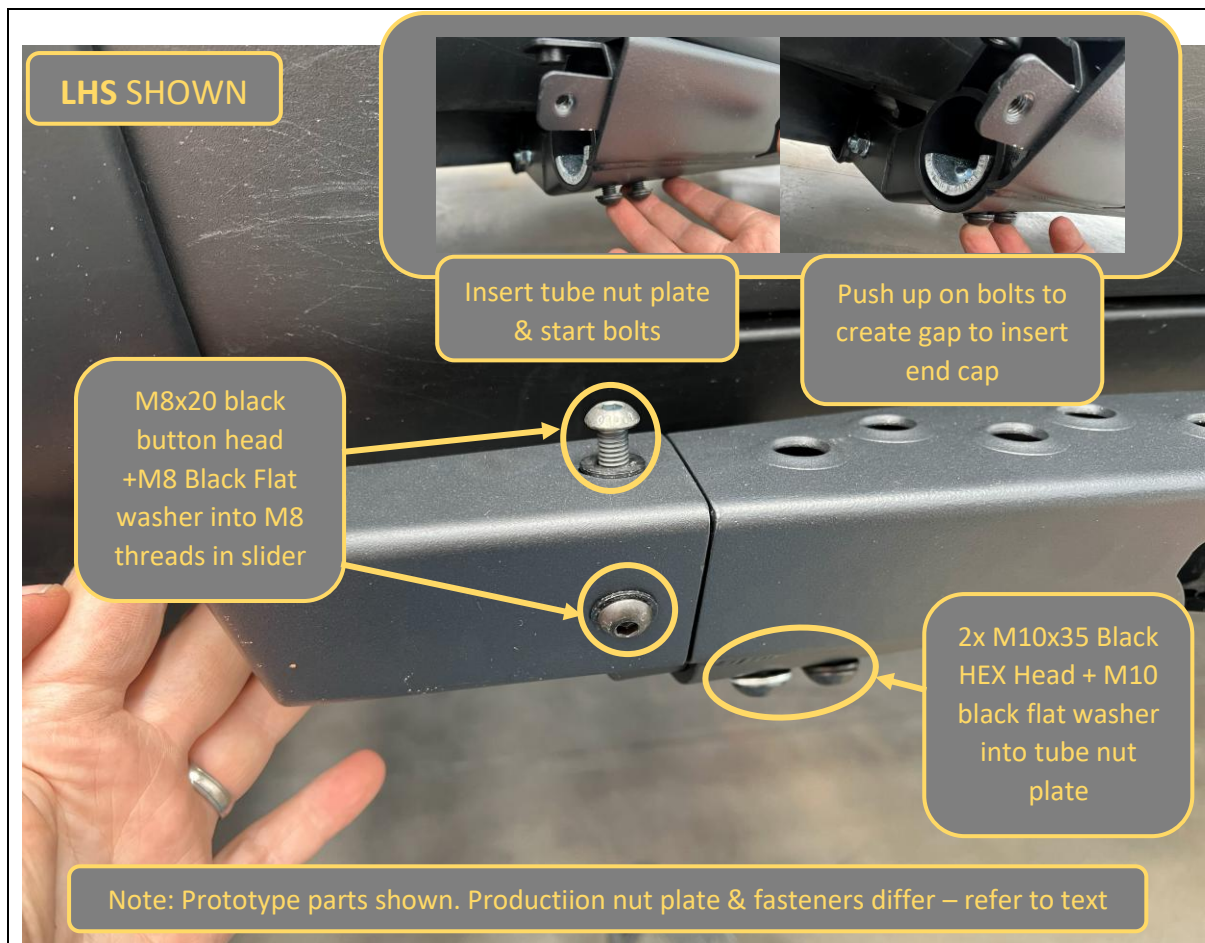


<p>39. Tighten the front mount braces.</p> <p>40. Tool access for the top bolt is tight. Use a 16mm socket, on a breaker bar with articulating head joint to hold the top bolt from inside the body mount pressing as shown.</p> <p>Tighten nut using 15mm spanner.</p>	<p><b>TOOLS REQUIRED</b></p> <p>15mm Spanner 16mm Socket Breaker bar with articulating head joint.</p>
	<p><b>FASTENERS</b></p>



41. If also fitting side rails to cars equipped with a Toro bull bar do so now, follow instructions supplied with the side rail kit.	<b>TOOLS REQUIRED</b>  Refer to Side Rail Kit instructions
	<b>FASTENERS</b>  Refer to Side Rail Kit instructions





42. If you are not fitting side rails, fit the end caps to the front of the sliders.
43. First insert the tube nut plate into the slider tube and thread in 2x M10x35 Black Zinc Bolts with M10 black washers.
44. Push up on the bolts to lift the nut plate and create a gap to allow the end cap to be fitted on the end of the slider. The tube portion of the end cap should sit between the slider tube and the tube nut plate.
45. Secure the end cap with 2x M8x20 Black Button head bolts & Black flat washers into M8 threads in the slider.
46. Tighten the M8 bolts first, then the M10 Bolts.
47. Complete end cap installation on other side of the vehicle.
48. Double check all fasteners are tight, and you are done!

#### TOOLS REQUIRED

5mm Hex Key  
16mm Spanner / Socket.

#### FASTENERS

2x M8x20 Black Button Head  
2x Black M8 Washer  
2x M10x35 Black Hex Bolt  
2x Black M10 Washer

Per Side



**Congratulations!**  
**Head for the tracks and enjoy your newly protected Prado!**